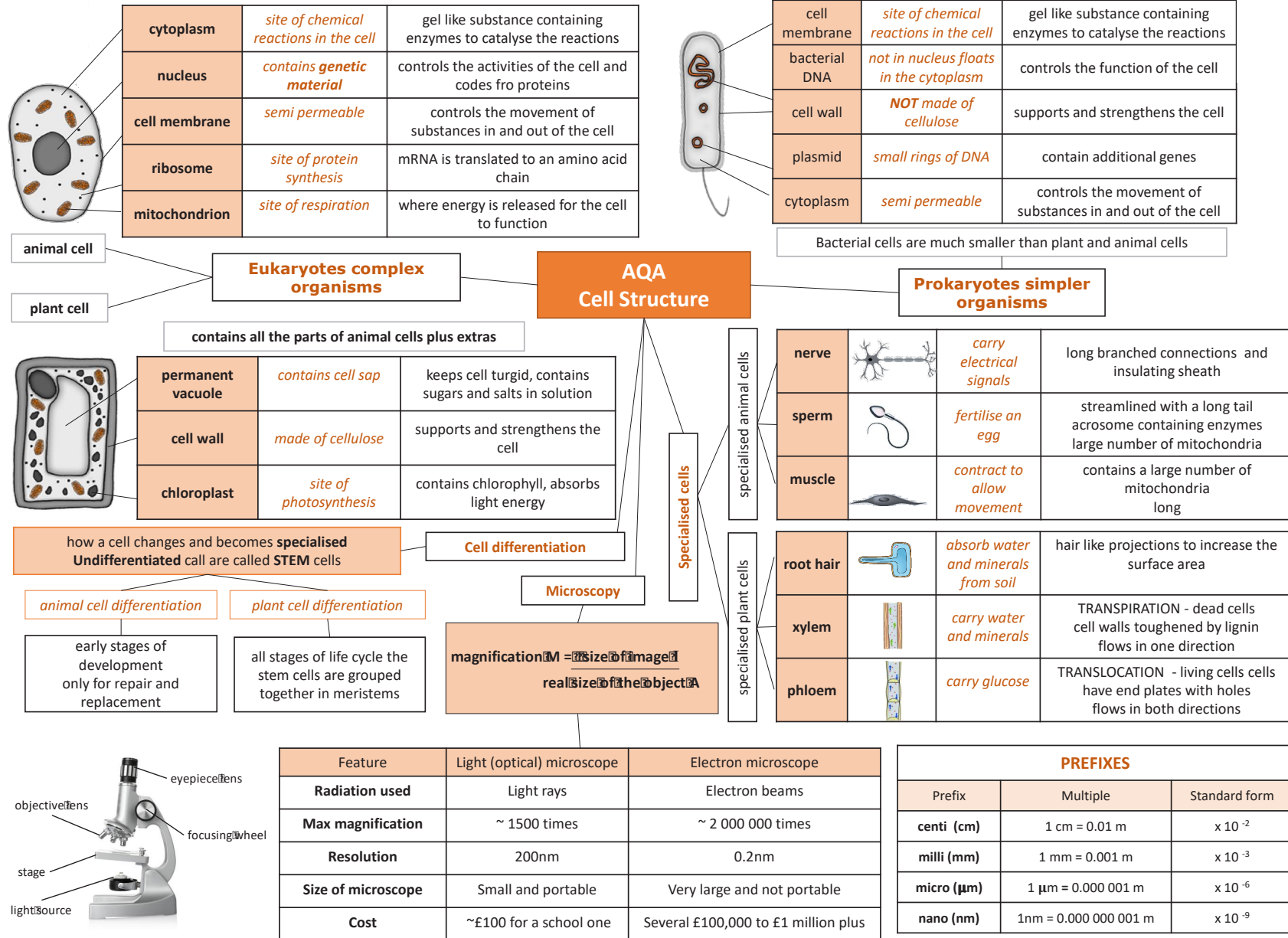
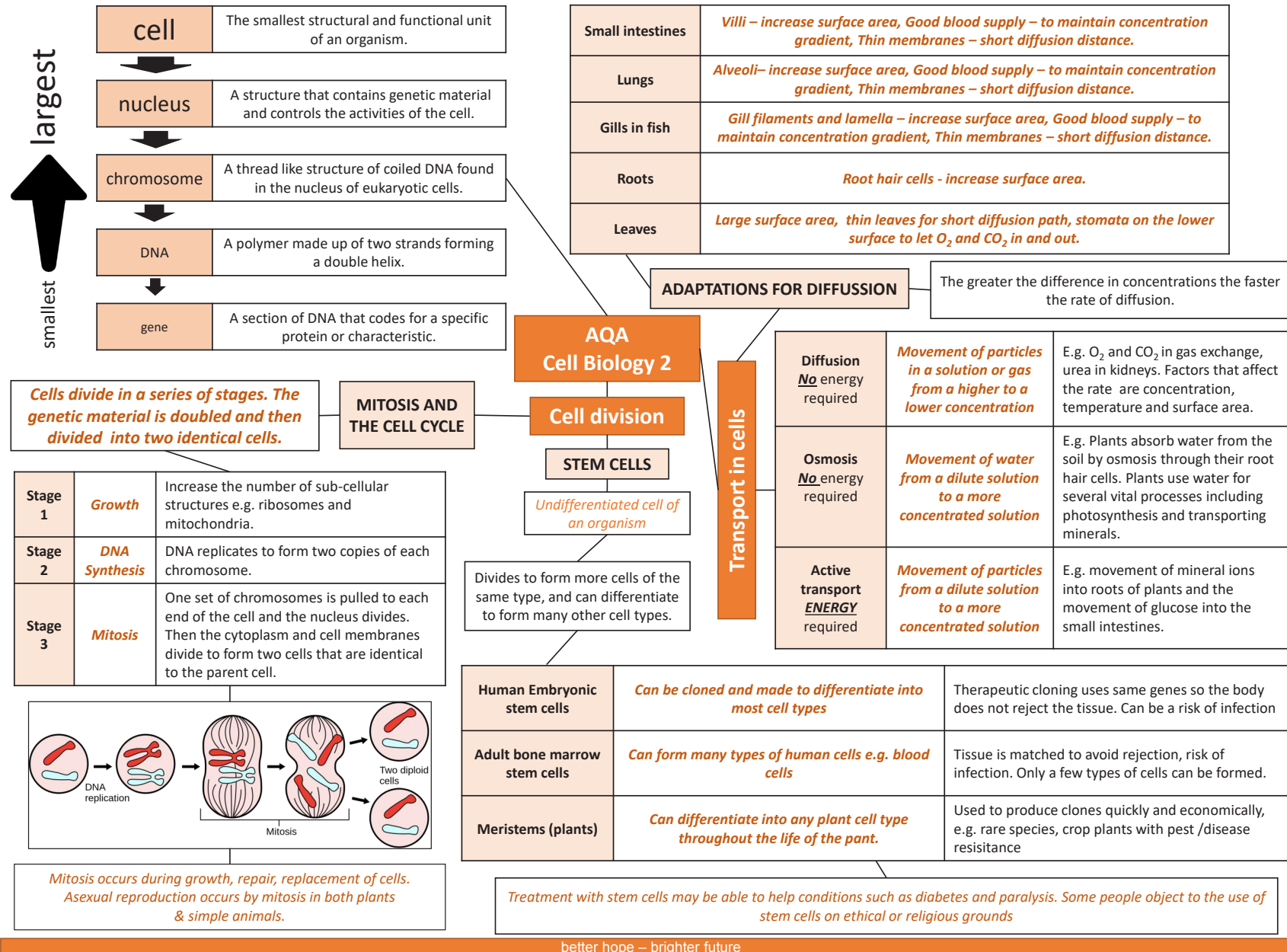


# BIOLOGY HIGHER TRILOGY KNOWLEDGE ORGANISER

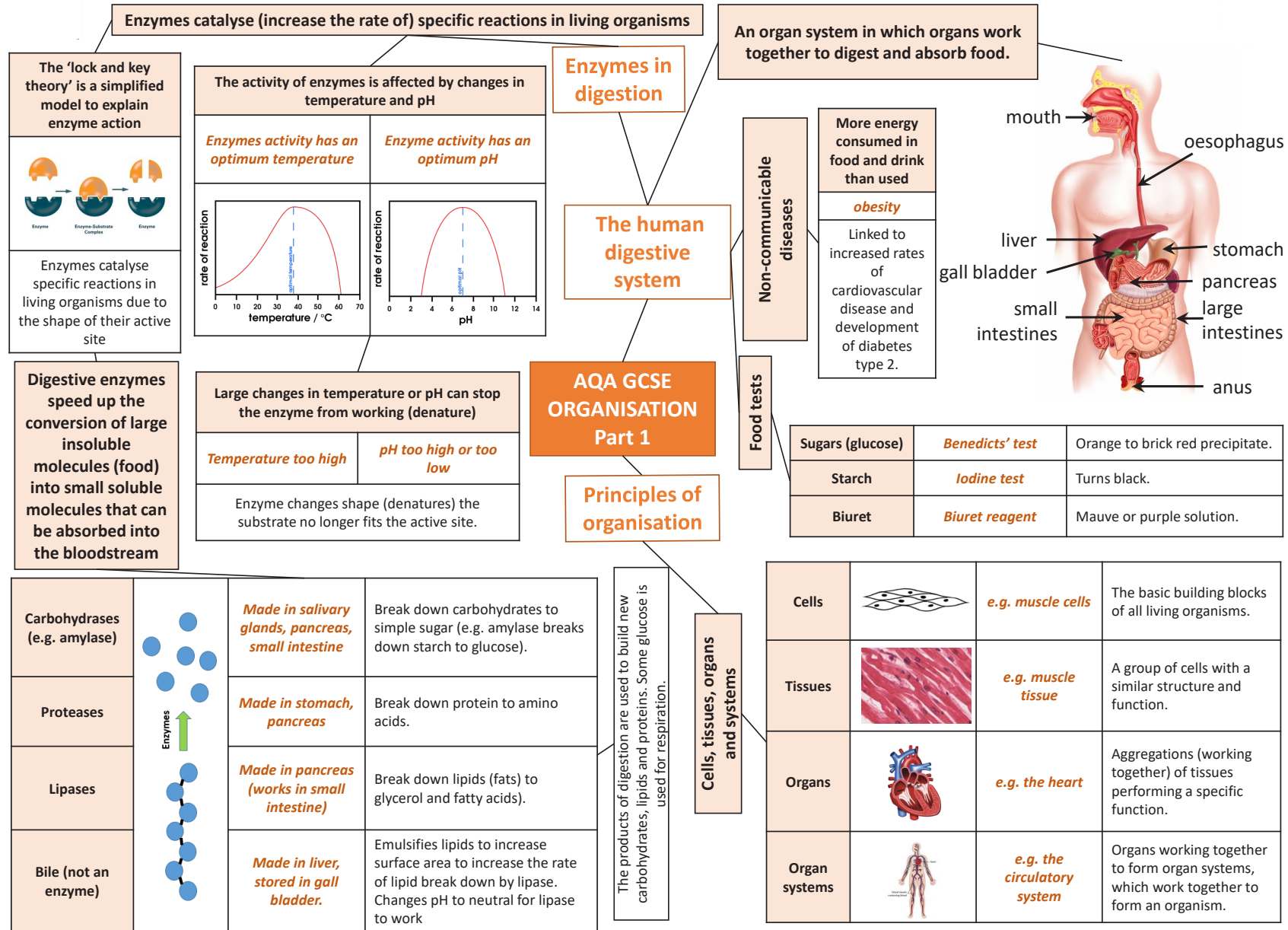


better hope – brighter future

# BIOLOGY HIGHER TRILOGY KNOWLEDGE ORGANISER

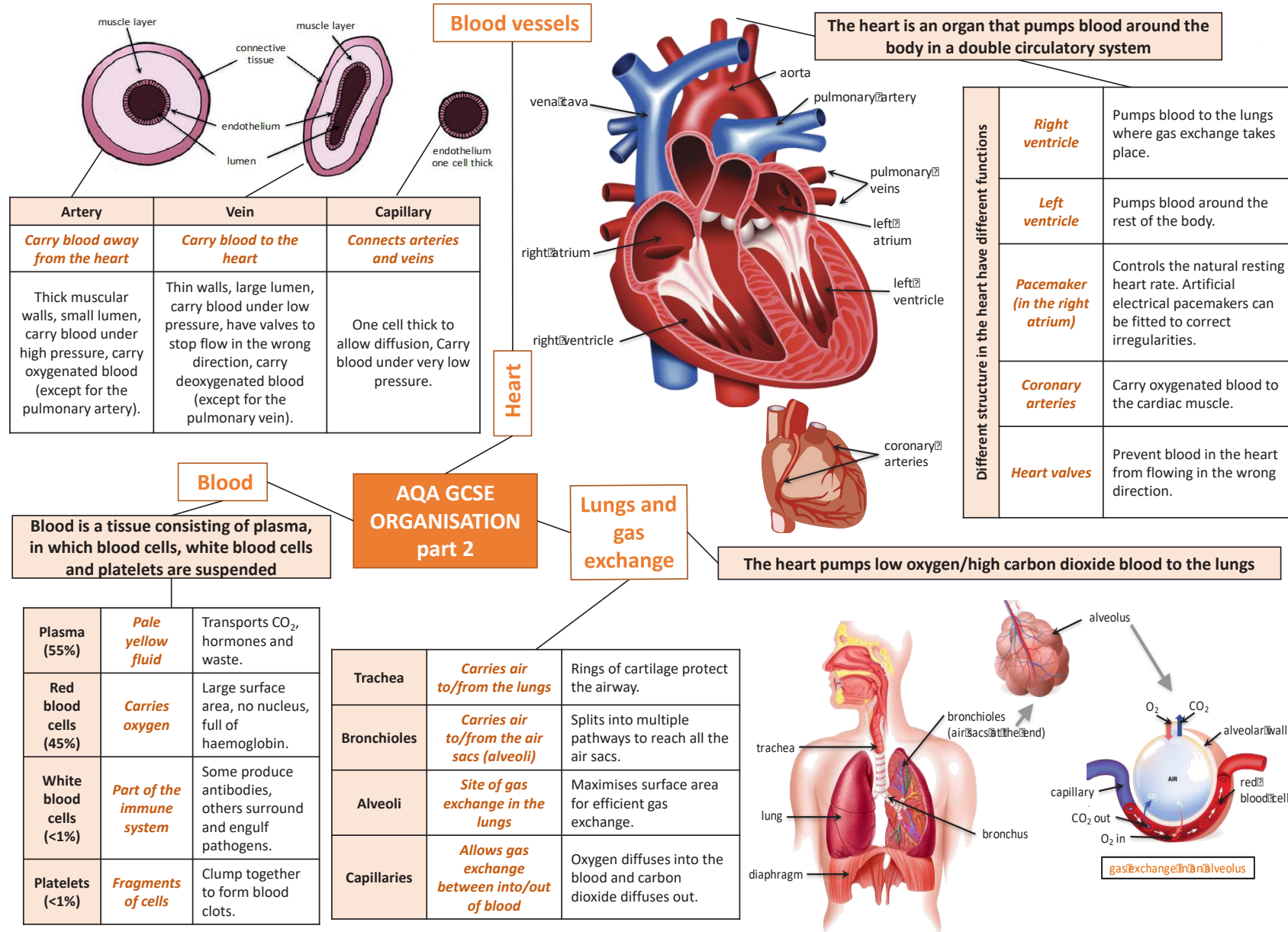


# BIOLOGY HIGHER TRILOGY KNOWLEDGE ORGANISER



better hope – brighter future

# BIOLOGY HIGHER TRILOGY KNOWLEDGE ORGANISER



better hope – brighter future



# BIOLOGY HIGHER TRILOGY KNOWLEDGE ORGANISER

Heart failure can be treated with a transplant or artificial heart

## AQA GCSE ORGANISATION part 3

## Plant tissues

Disease	Cause	Effect	Treatment
Coronary heart disease (CHD)	A build up for fatty substances in the coronary arteries (atherosclerosis)	Oxygenated blood cannot get to the cardiac muscle.	Stents: inserted into the blocked artery to open it up. Statins: lower harmful cholesterol.
Faulty heart valves	Valves don't open or close properly	Blood can leak or flow in the wrong direction	Biological valve transplant or a mechanical valve can be inserted

## Cancer

### Non-communicable diseases

The result of changes in DNA that lead to uncontrolled growth and division

Benign tumour	Contained in one area of the body (usually by a membrane) – not cancer.
Malignant tumour	Invasive tissues and spread to different parts of the body to form secondary tumours.

Some cancers have genetic risk factors.

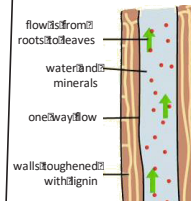
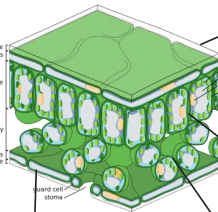
Carcinogens and ionising radiation increase the risk of cancer by changing/ damaging DNA

Risk factors for heart/lung disease and certain types of cancer include drinking alcohol, diet, obesity and smoking

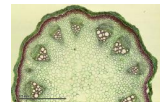
These risks factors can also affect the brain, liver and the health of unborn babies

## Plant organ systems

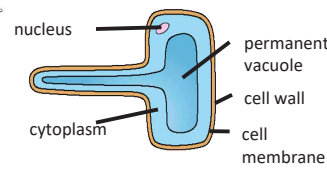
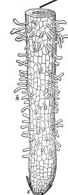
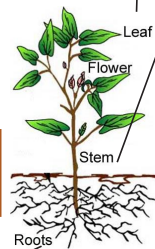
The roots, stem and leaves form a plant organ system for transport of substances around the plant



xylem



phloem



Epidermal tissues	Waxy cuticle (top layer of the leaf)	Reduces water loss from the leaf
	Guard cells and stomata	Guard cells open and close the stomata to control water loss and allow for gas exchange (oxygen and carbon dioxide).
Palisade mesophyll	Palisade cells	Cells near the top surface of the leaf that are packed with chloroplasts that contain chlorophyll. Both adaptations maximize photosynthesis.
Spongy mesophyll	Air spaces in the leaf between cells	Increased surface area for gas exchange so that carbon dioxide can diffuse into photosynthesising cells.
xylem	Hollow tubes strengthened by lignin adapted for the transportation of water in the transpiration stream	Allows transport of water and mineral ions from the roots to the stem and the leaves.
phloem	Cell sap moves from one phloem cell to the next through pores in the end walls	Transports dissolved sugars from the leaves to the rest of the plant for immediate use or storage (translocation).
Meristem tissue	New cells (roots and shoot tips) are made here including root hair cells	Root hair cells have an increased surface area for the uptake of water by osmosis, and mineral ions by active transport.

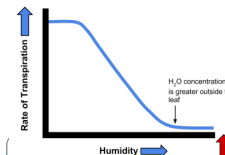
A potometer is used to measure the amount of water lost over time (rate of transpiration)

## Transpiration

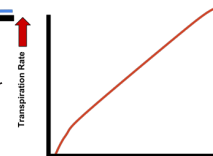
The rate at which water is lost from the leaves of a plant. The transpiration stream is the column of water moving through the roots, stem and leaves

Temperature, humidity, air movement and light intensity affect the rate of transpiration.

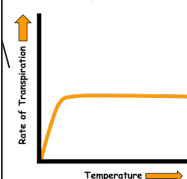
Effect of Humidity on Plant Transpiration



Effect of Wind Velocity on Plant Transpiration



Effect of Temperature on Plant Transpiration



The shape of the graph for light intensity is the same for temperature (energy)

better hope – brighter future

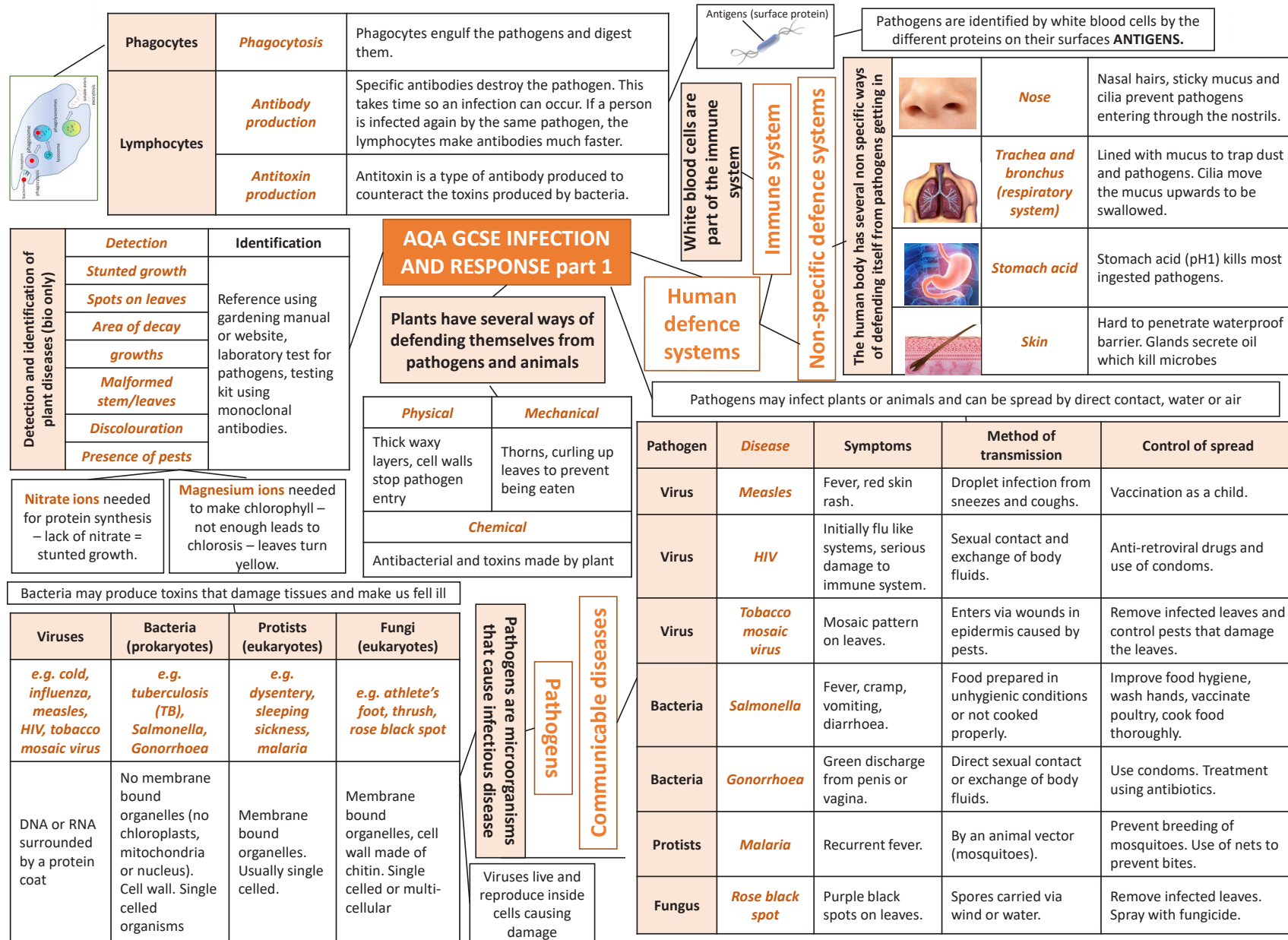


The Wellington Academy

proud to be part of

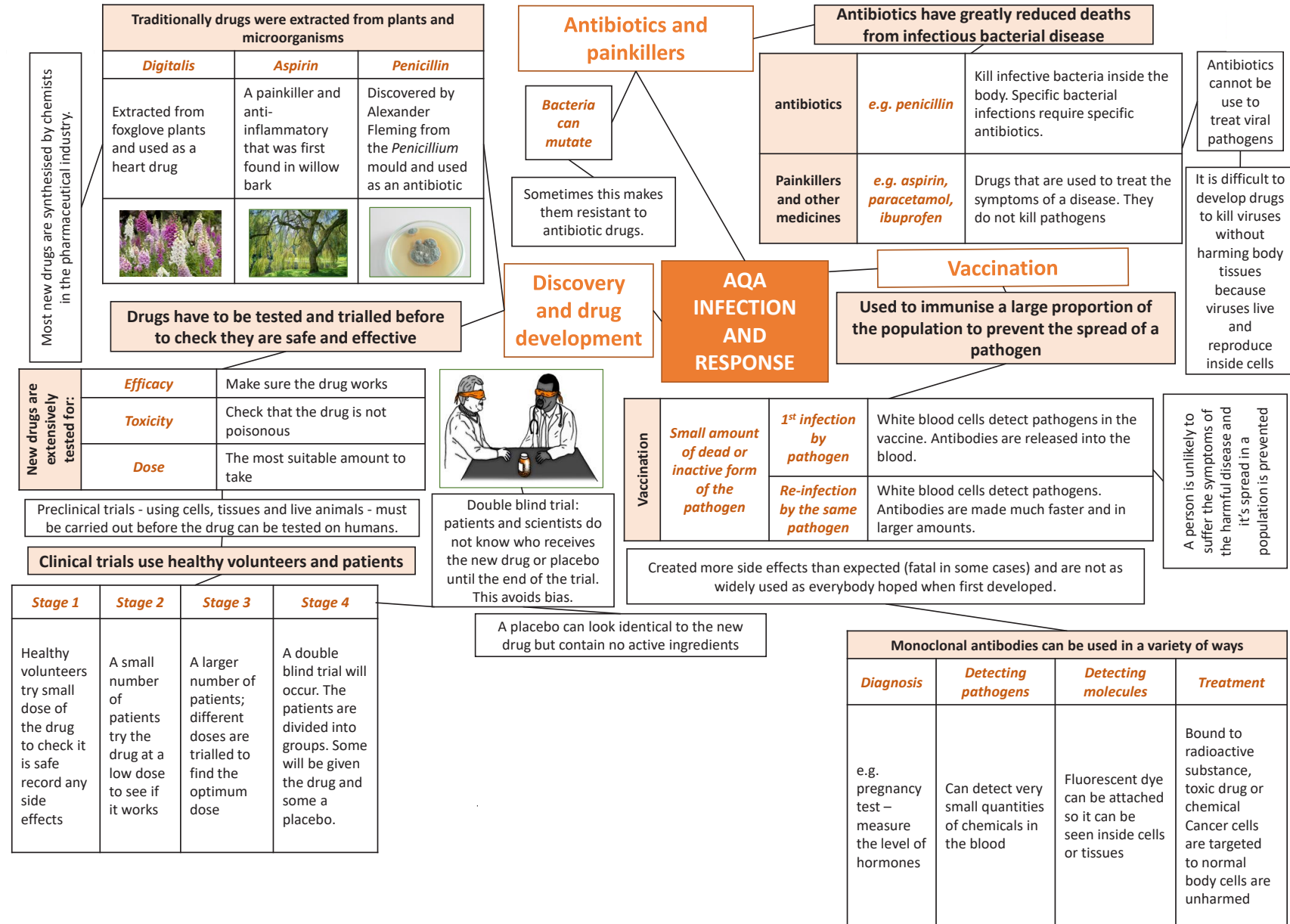


# BIOLOGY HIGHER TRILOGY KNOWLEDGE ORGANISER



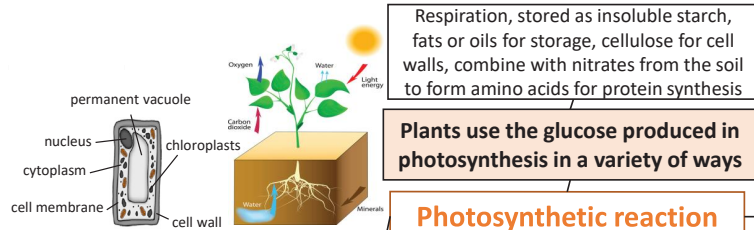
better hope – brighter future

# BIOLOGY HIGHER TRILOGY KNOWLEDGE ORGANISER



better hope – brighter future

# BIOLOGY HIGHER TRILOGY KNOWLEDGE ORGANISER



## Photosynthetic reaction

The plant manufactures glucose from carbon dioxide and water using energy transferred from the environment to the chloroplasts by light

Photosynthesis	Plants make use of light energy from the environment (ENDOTHERMIC) to make food (glucose)	Carbon dioxide + Water $\xrightarrow{\text{light}}$ Oxygen + Glucose
		$\text{CO}_2 + \text{H}_2\text{O} \xrightarrow{\text{light}} \text{O}_2 + \text{C}_6\text{H}_{12}\text{O}_6$

The rate of photosynthesis is affected by temperature, light intensity, carbon dioxide concentration, and the amount of chlorophyll

Factor	How the rate is affected	Limiting factors (why the rate stops going up)
Temperature	As the temperature of the environment the plant is in increases rate of photosynthesis increases (up to a point) as there is more energy for the chemical reaction.	Photosynthesis is an enzyme controlled reaction. If the temperature increases too much, then the enzymes become denatured and the rate of reaction will decrease and stop
Light intensity	Light intensity increases as the distance between the plant and the light sources increases. As light intensity increases so does the rate of photosynthesis (up to a point) as more energy is available for the chemical reaction.	At point X another factor is limiting the rate of photosynthesis. This could be carbon dioxide concentration, temperature or the amount of chlorophyll
Carbon dioxide concentration	Carbon dioxide is needed for plants to make glucose. The rate of photosynthesis will increase when a plant is given higher concentrations of carbon dioxide (up to a point).	At point X another factor is limiting the rate of photosynthesis. This could be light intensity, temperature or the amount of chlorophyll
Amount of chlorophyll	Chlorophyll is a photosynthetic pigment that absorbs light and allows the reaction between water and carbon dioxide to occur (photosynthesis)	Another factor could limit the rate of photosynthesis. This could be light intensity, temperature or the carbon dioxide concentration

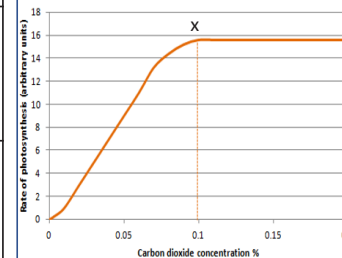
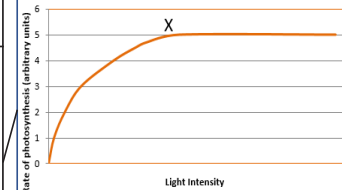
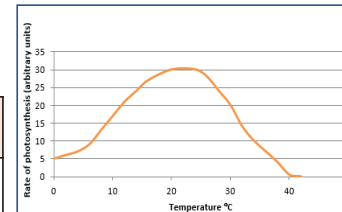
Control conditions in greenhouses to reduce limiting factors can improve crop yields	Heating	Used to provide optimum temperatures for maximum plant growth.
	Artificial lighting	Enhances the natural sunlight especially overnight and on cloudy days.
	Extra carbon dioxide	Gas can be pumped into the air inside the greenhouse.

Growers must balance the economics of additional costs of controlling the conditions to maximise photosynthesis with making a profit.



## AQA GCSE BIOENERGETICS part 1

## Rate of photosynthesis



## Rate of photosynthesis HT Only

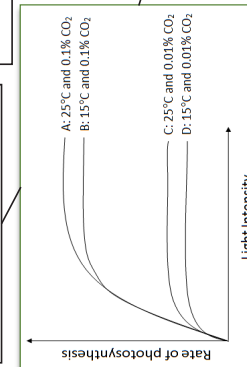
**Graph lines C and D:** If temperature is increased by 10°C then a slight increase in rate of photosynthesis occurs.

Explain graphs of two or three factors and decide which is the limiting factor

**Graph lines A and D:** If carbon dioxide concentration and temperature are increased the rate of photosynthesis increases significantly up to a point.

**Graph Lines A and B:** If carbon dioxide concentration is increased from 0.01% to 0.1% then a large increase in rate occurs up to a point.

**Graph line A:** Rate could be limited by temperature and/or amount of chlorophyll. Plant tissue can be damaged when carbon dioxide concentrations exceed 0.1%.



better hope – brighter future



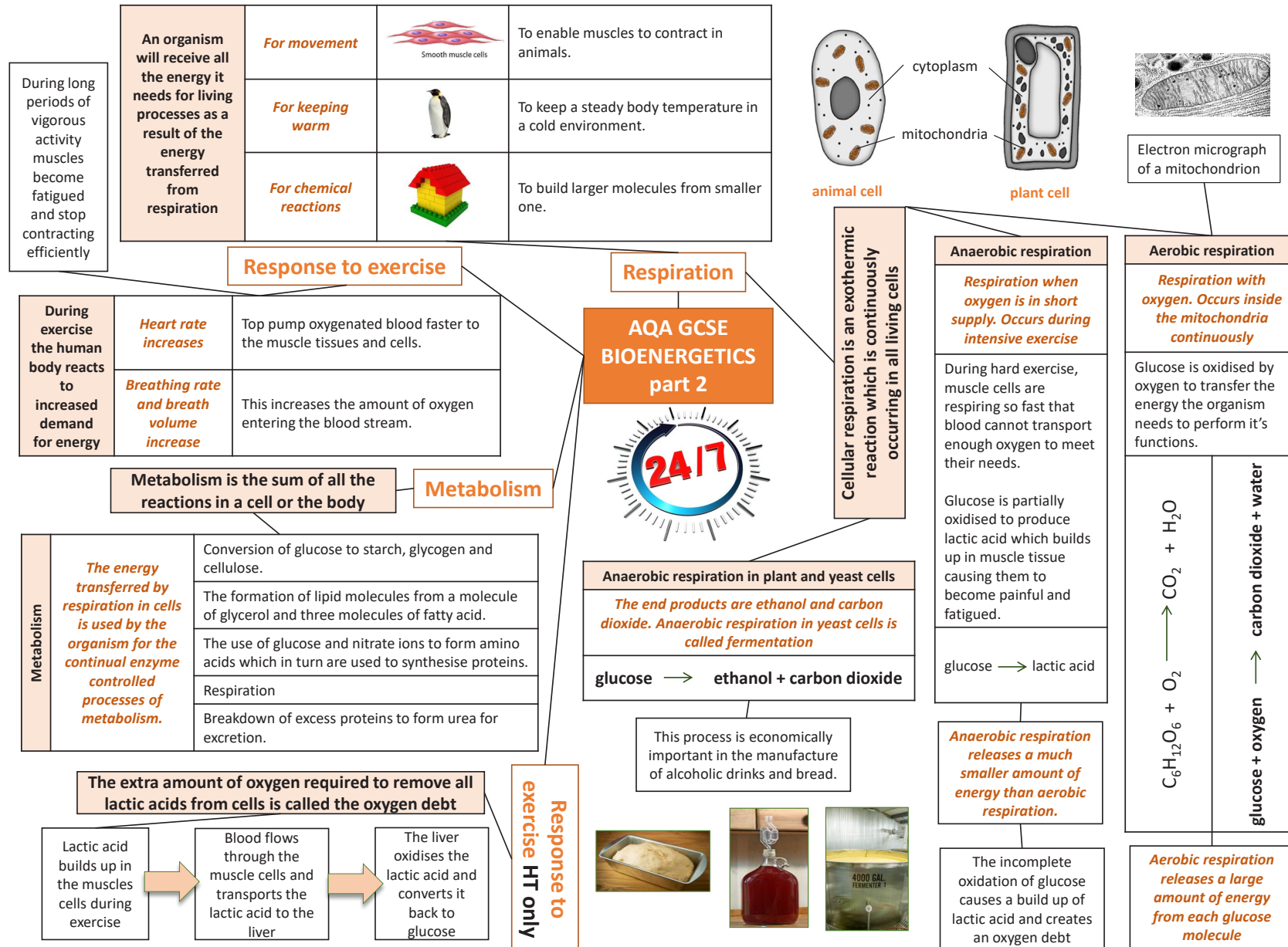
The Wellington Academy

proud to be part of



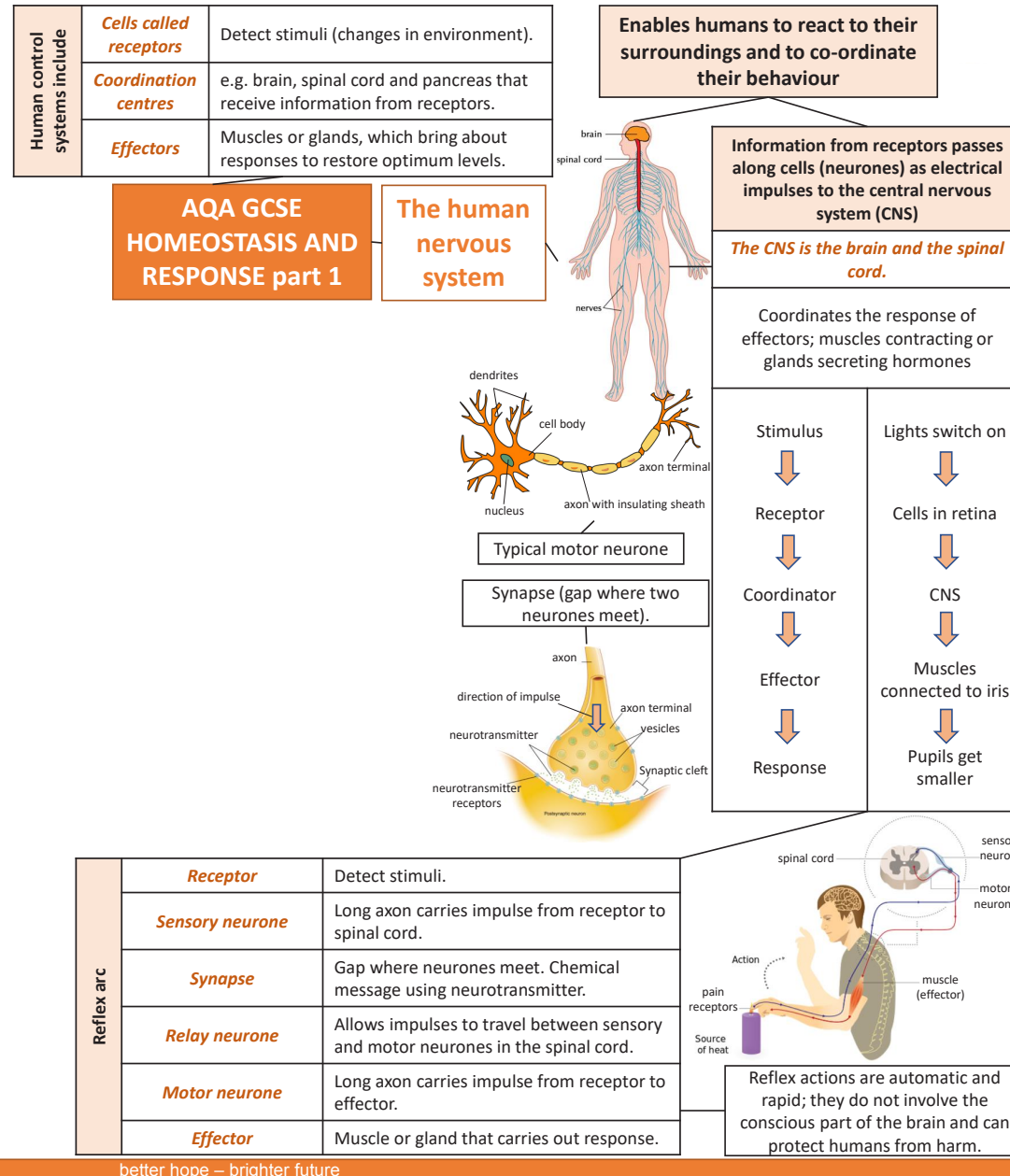


# BIOLOGY HIGHER TRILOGY KNOWLEDGE ORGANISER



better hope – brighter future

# BIOLOGY HIGHER TRILOGY KNOWLEDGE ORGANISER



better hope – brighter future

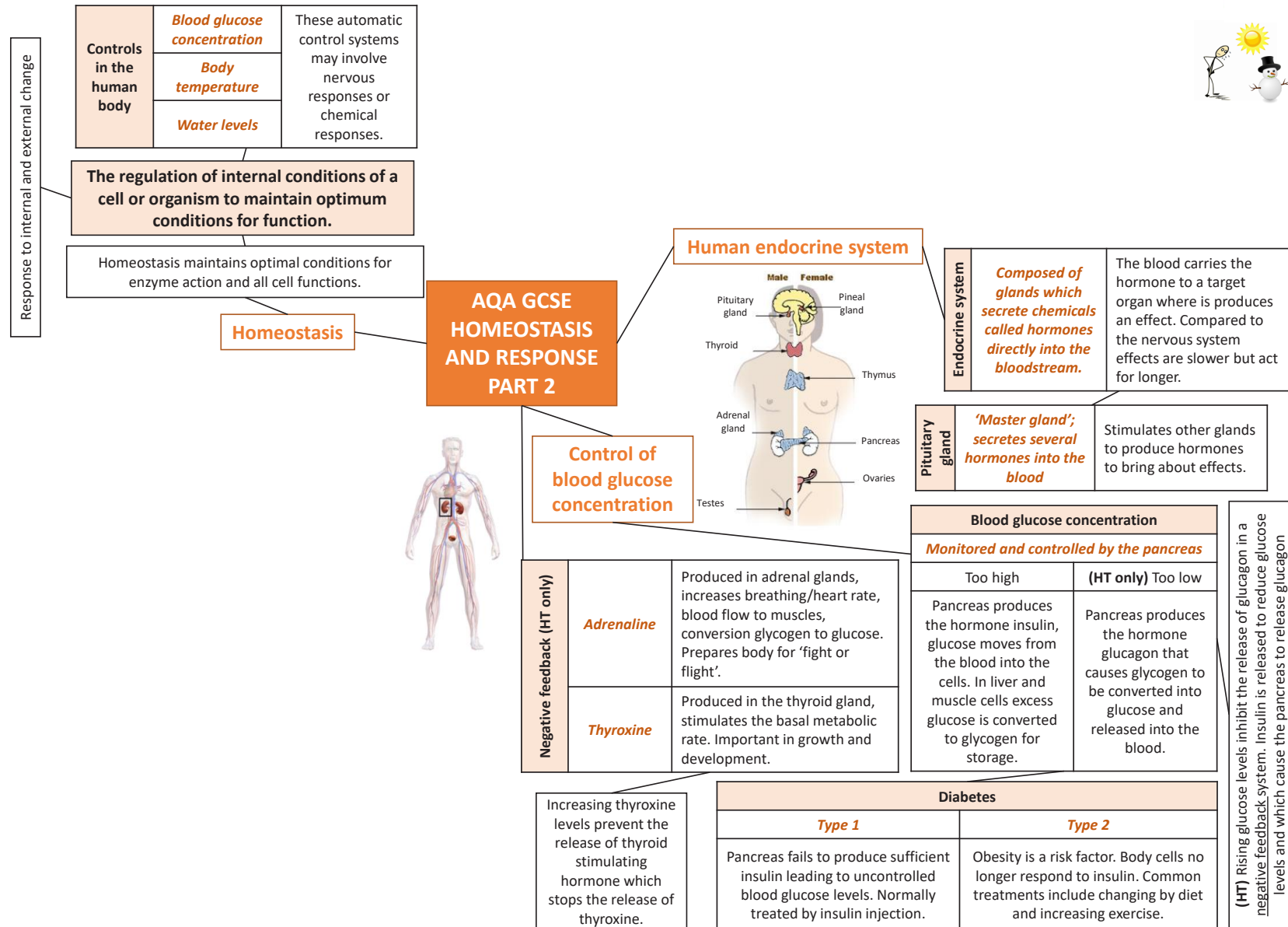


The  
**Wellington**  
Academy

proud  
to be  
part of

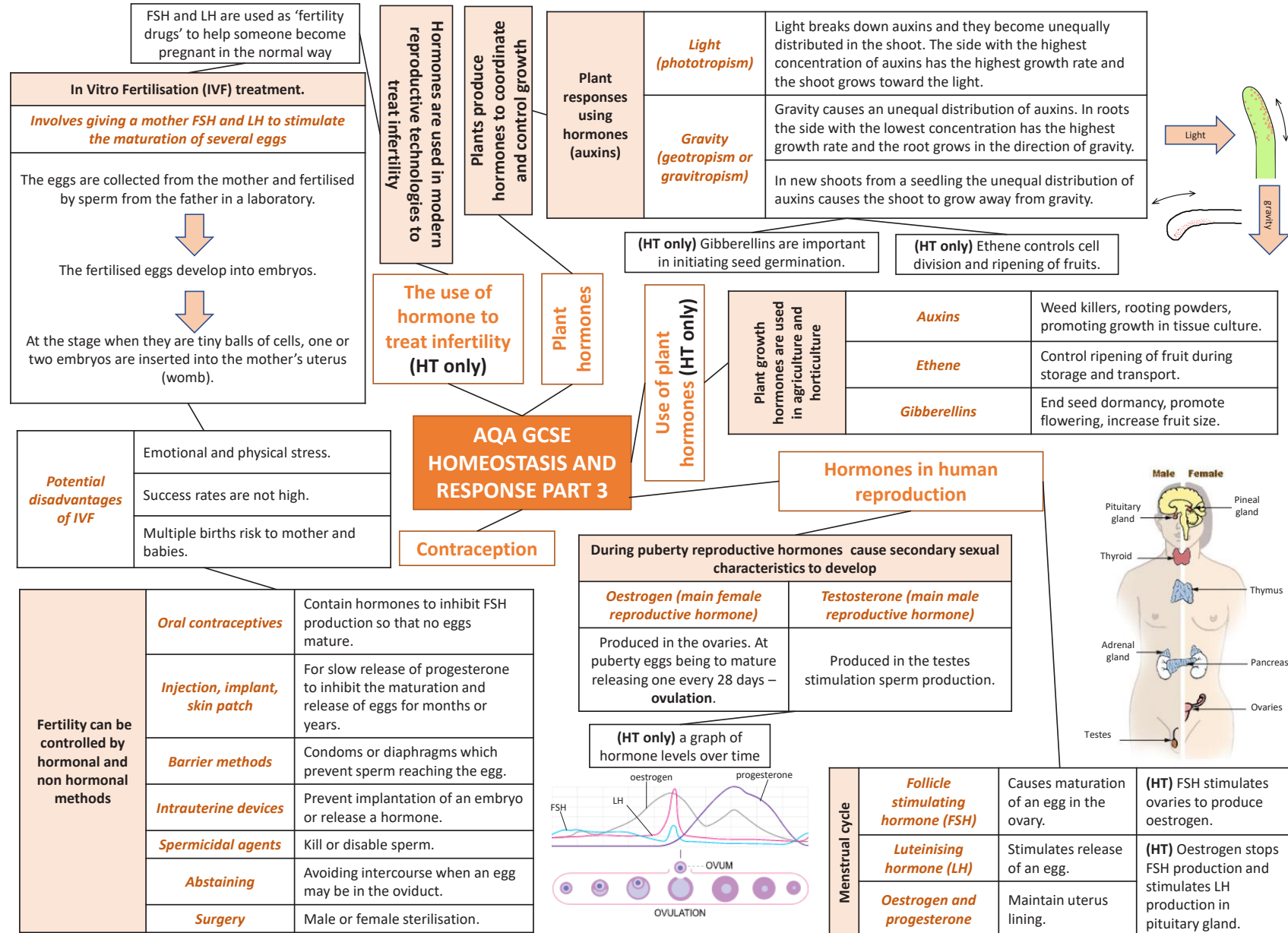


# BIOLOGY HIGHER TRILOGY KNOWLEDGE ORGANISER



better hope – brighter future

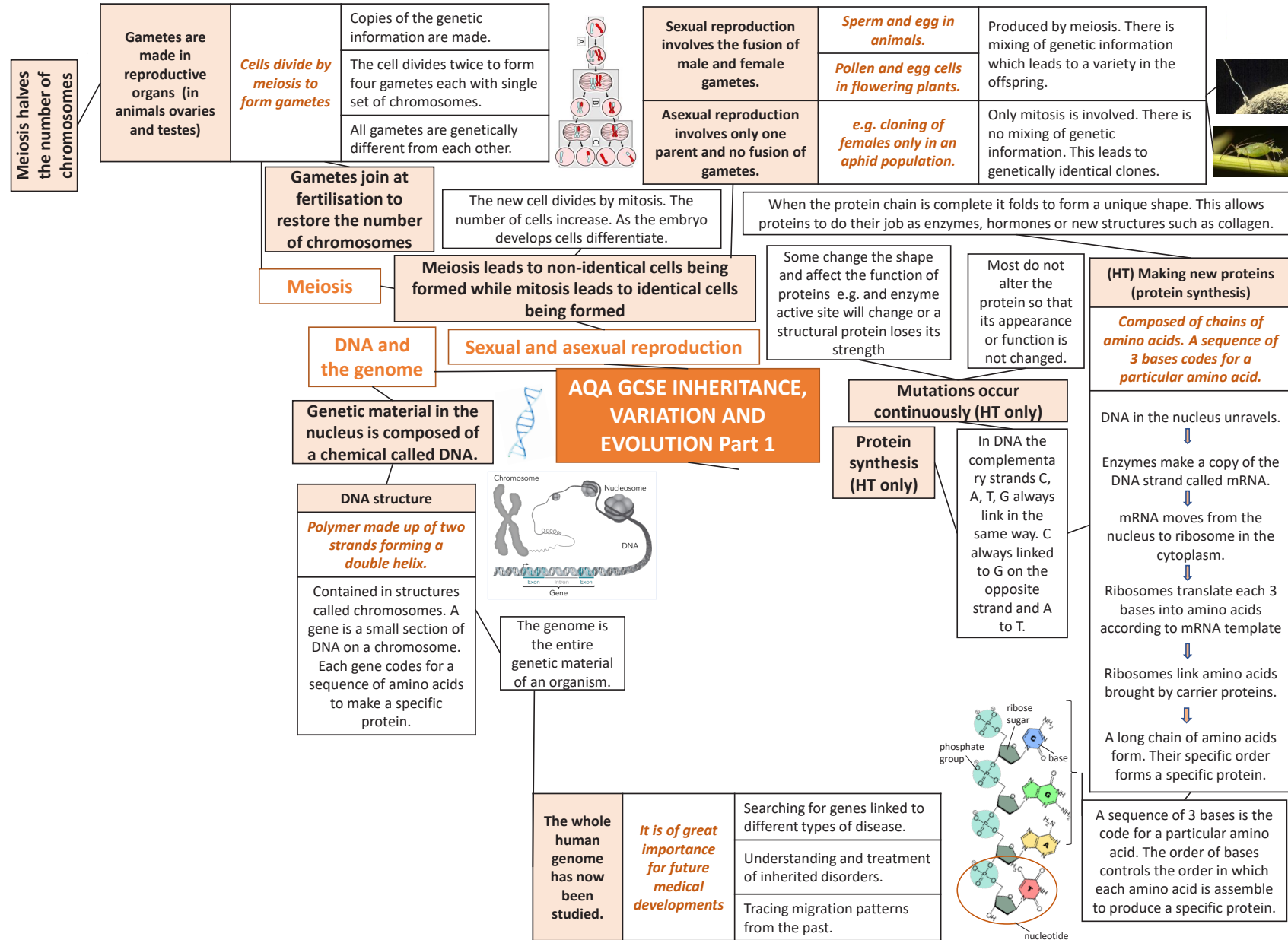
# BIOLOGY HIGHER TRILOGY KNOWLEDGE ORGANISER



better hope – brighter future

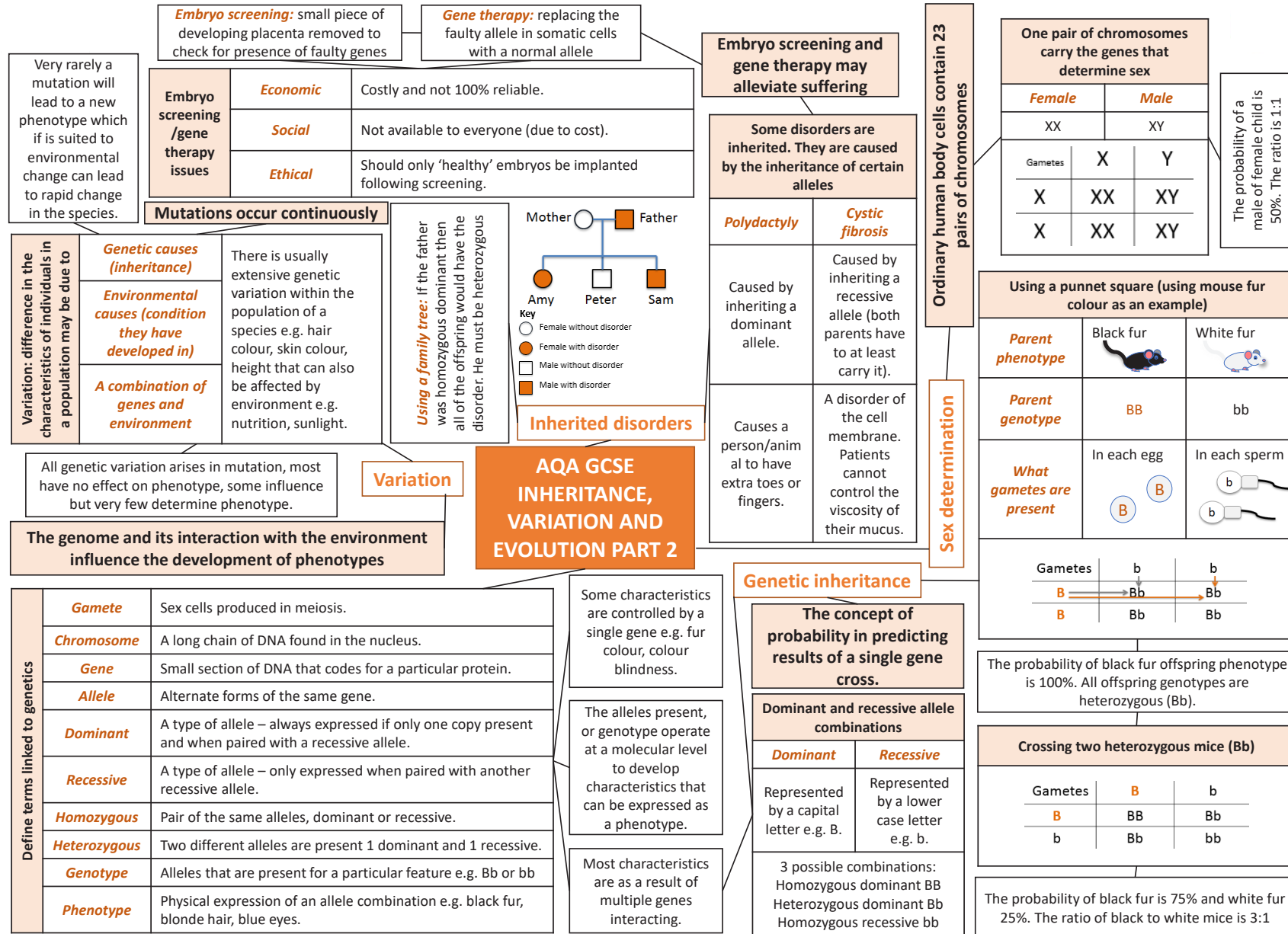


# BIOLOGY HIGHER TRILOGY KNOWLEDGE ORGANISER



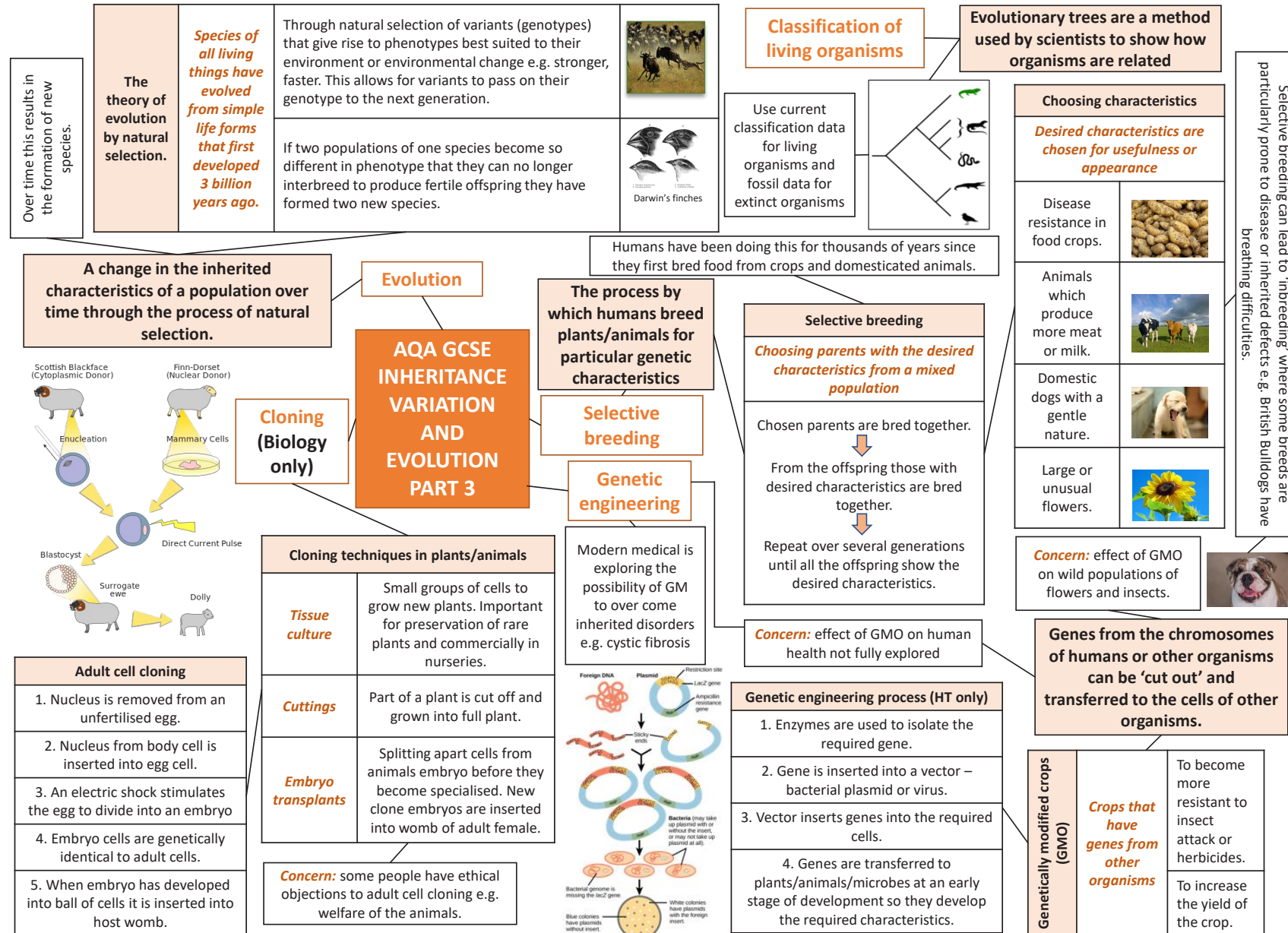
better hope – brighter future

# BIOLOGY HIGHER TRILOGY KNOWLEDGE ORGANISER



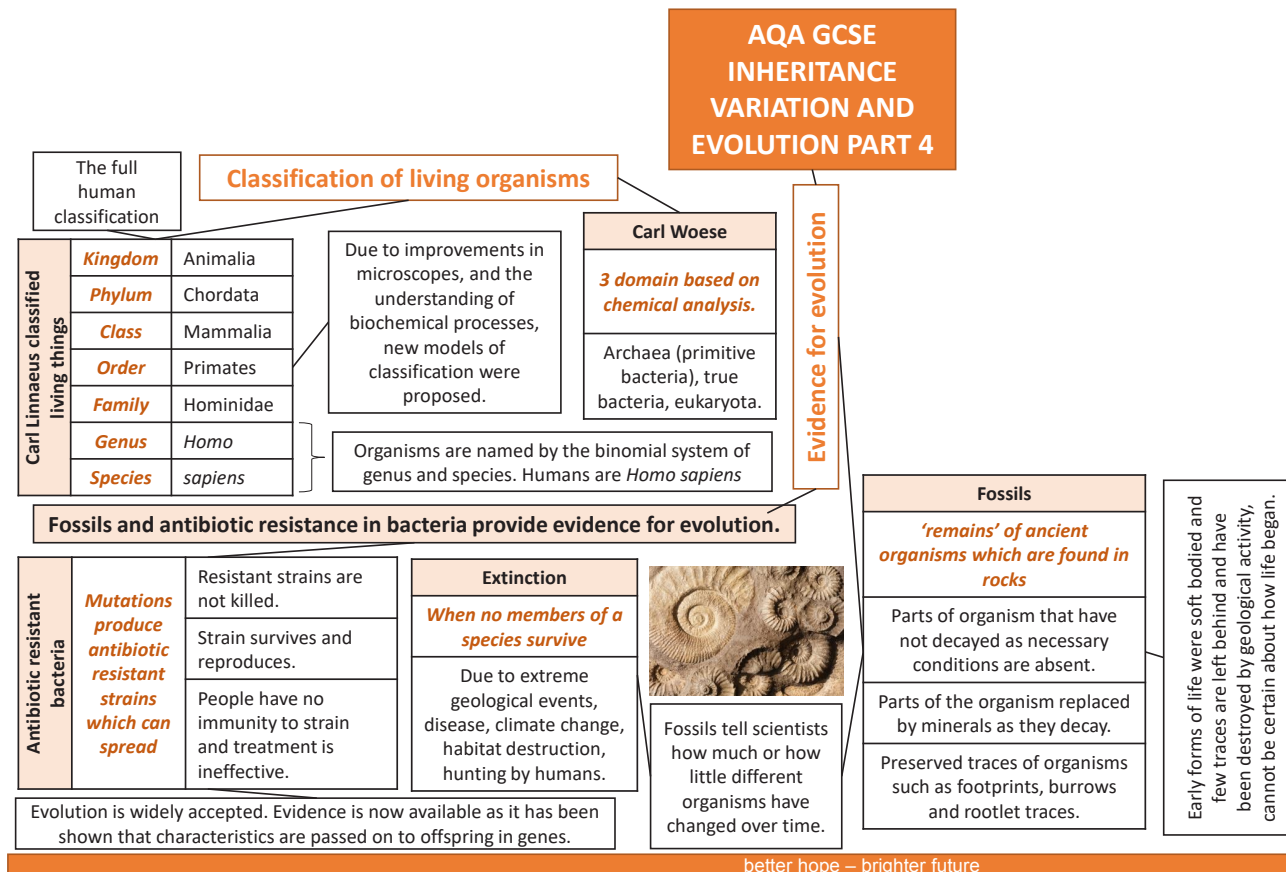
better hope – brighter future

# BIOLOGY HIGHER TRILOGY KNOWLEDGE ORGANISER



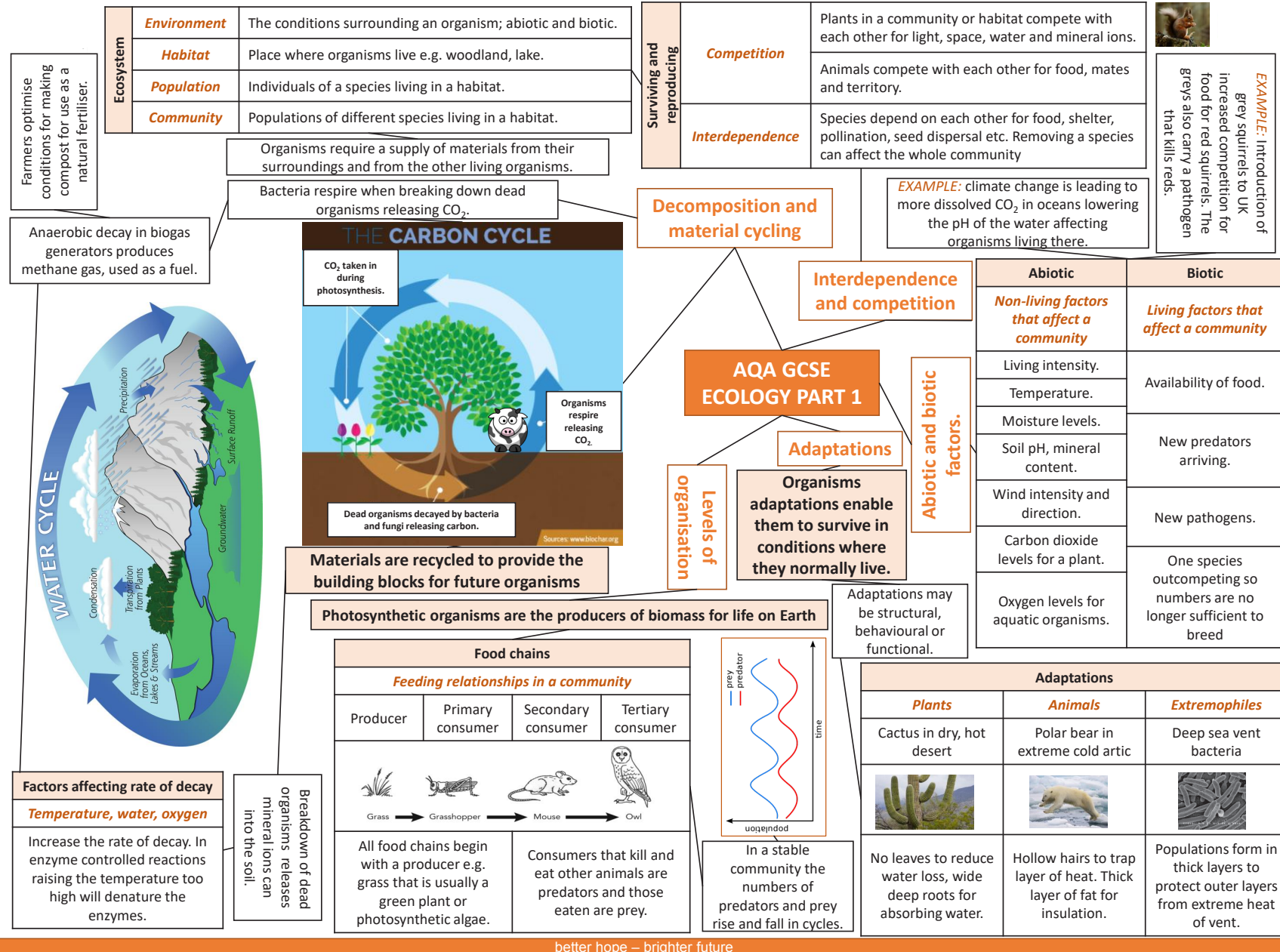
better hope – brighter future

# BIOLOGY HIGHER TRILOGY KNOWLEDGE ORGANISER



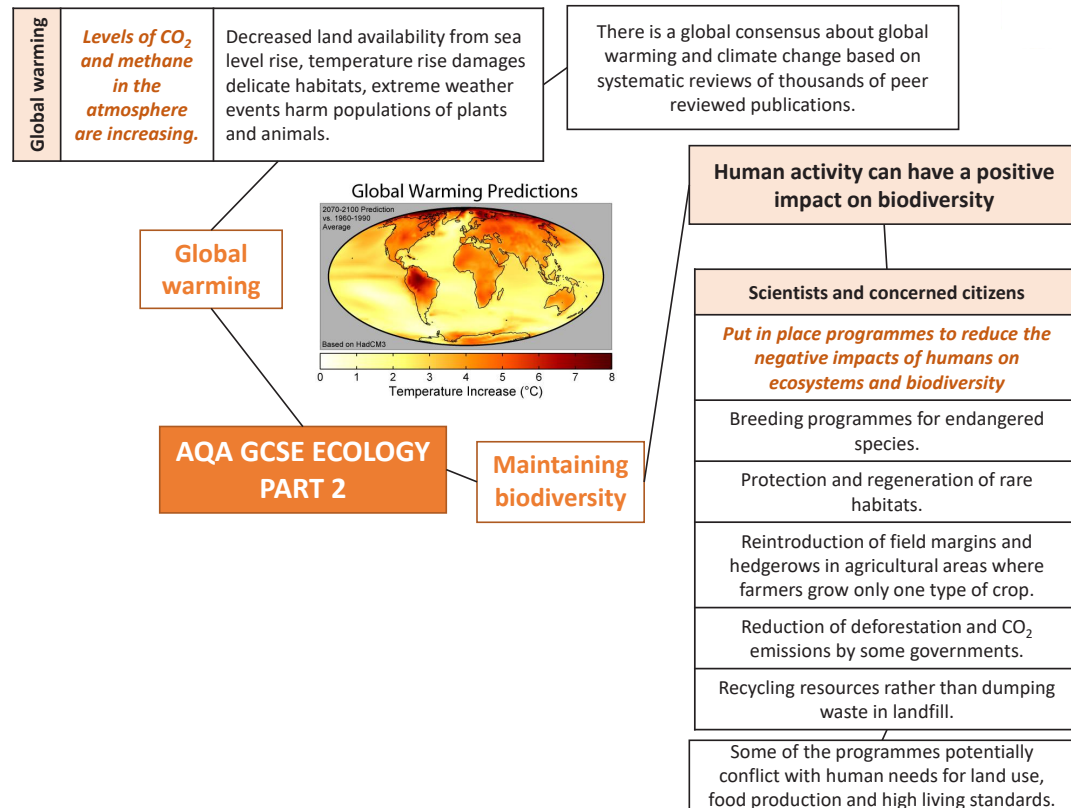


# BIOLOGY HIGHER TRILOGY KNOWLEDGE ORGANISER



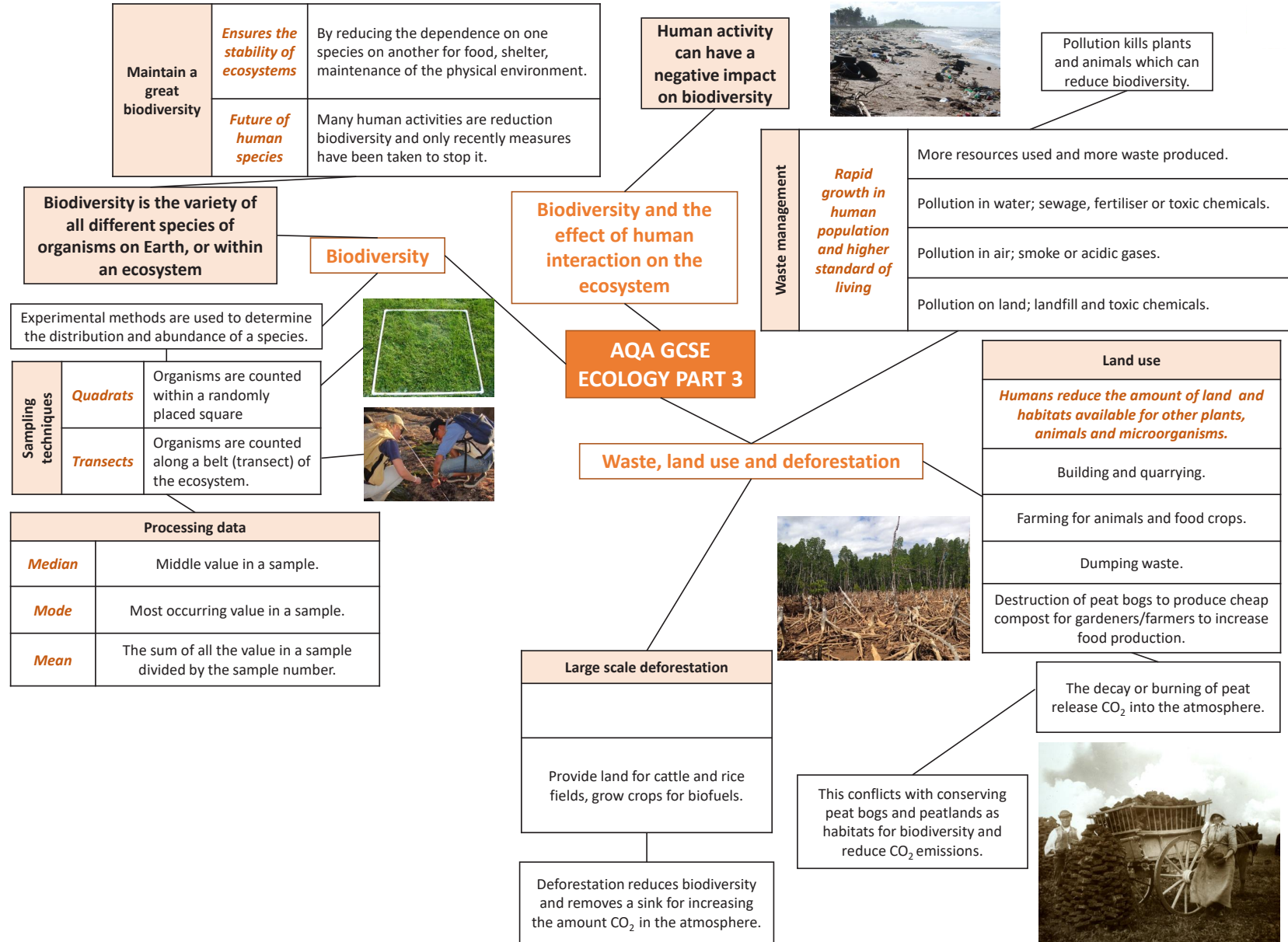
better hope – brighter future

# BIOLOGY HIGHER TRILOGY KNOWLEDGE ORGANISER



better hope – brighter future

# BIOLOGY HIGHER TRILOGY KNOWLEDGE ORGANISER



better hope – brighter future